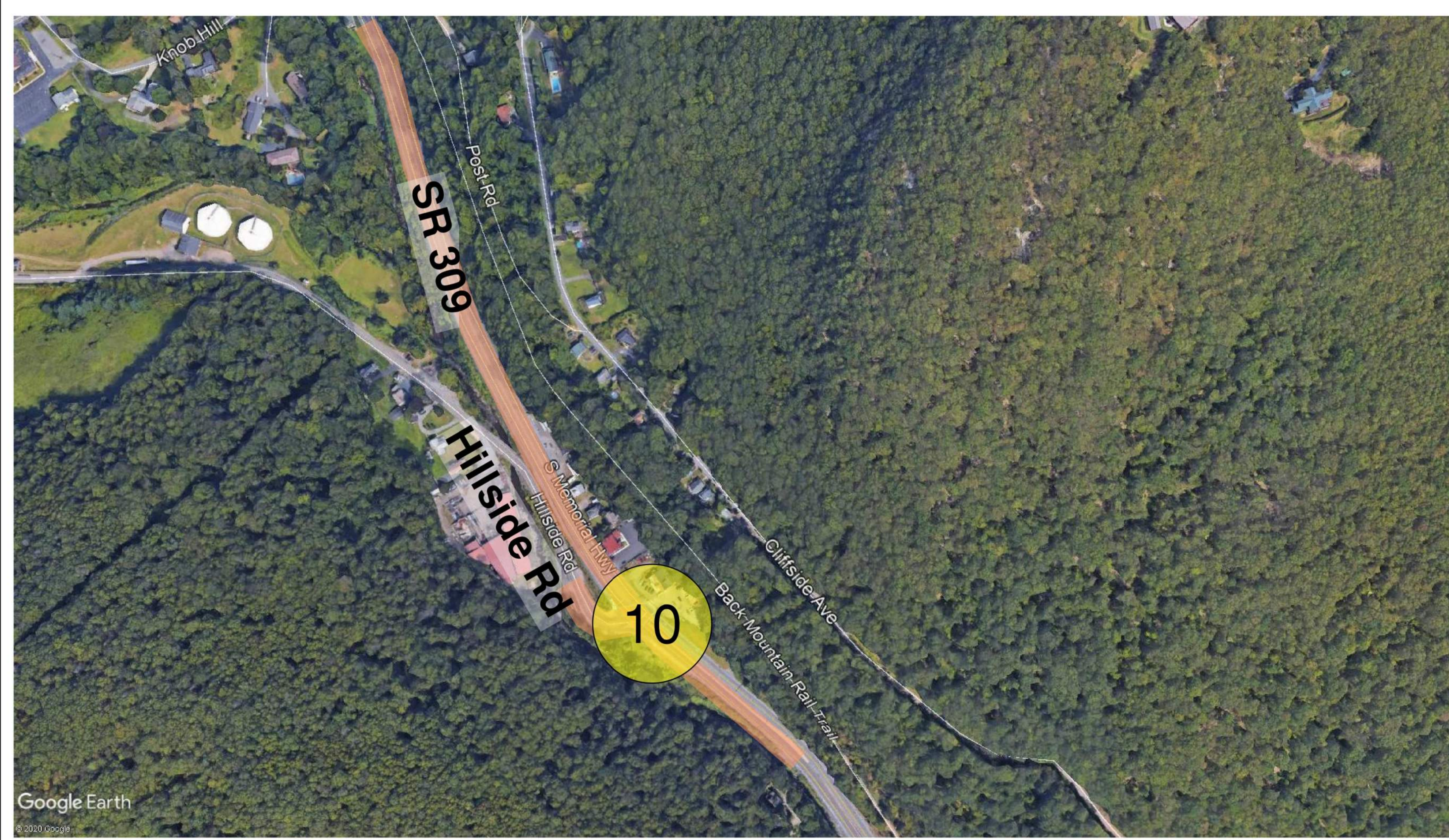
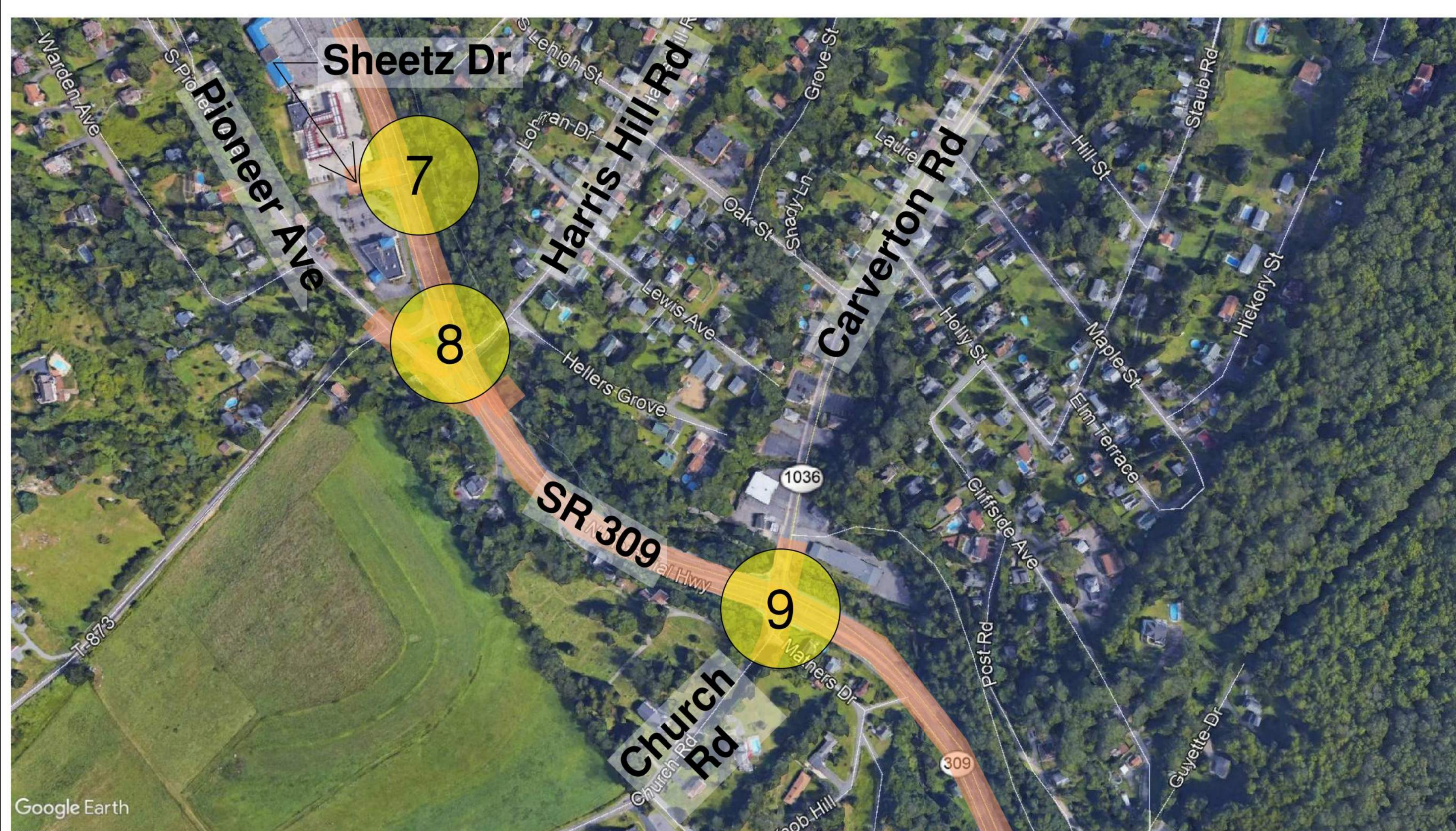
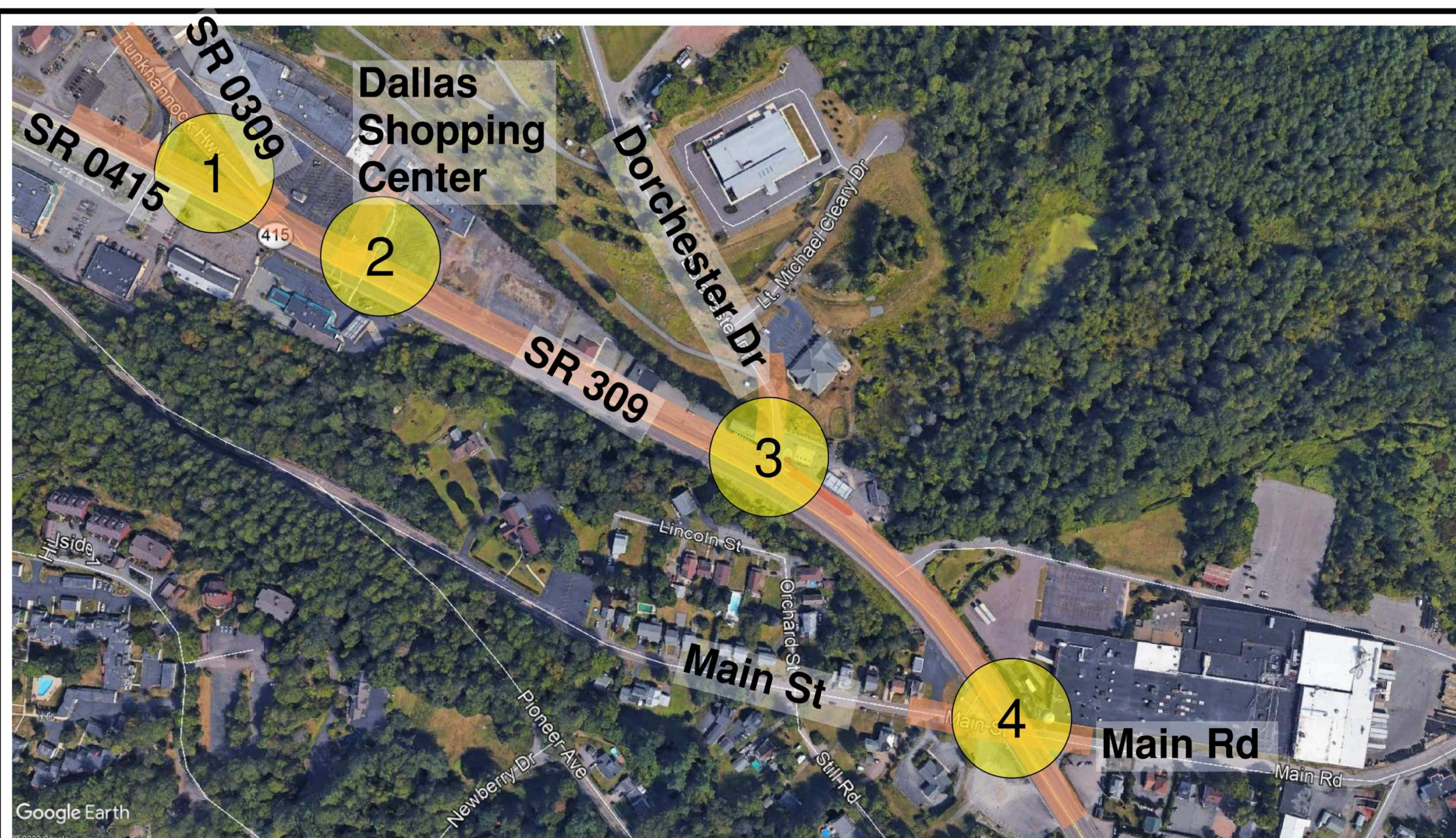


LIST OF IMPROVEMENTS

- Optimize signal coordination and change clearance intervals at all intersections along the SR 0309 corridor.
- Implement radar to detect vehicle presence to extend green light and allow for better traffic flow on SR 0309 corridor.
- Re-stripe a dedicated southbound left turn lane at the intersection of SR 0309 & Hillside Rd (10).
- Upgrade signal equipment at all intersections along SR 0309 such as installation of additional signal heads, retro reflective backplates on all signal heads, new mast arms where necessary, and replacement of 8" signal heads with 12" signal heads (SEE 1 & 2).
- Install countdown pedestrian signal heads (SEE 3), pedestrian stub poles (SEE 4), and improved Type C crosswalks at all proposed crossings. Relocate selected crosswalks to provide a shorter, more direct crossing for pedestrians.
- Construct ADA compliant curb ramps at all proposed crossings and update all existing non-compliant curb ramps at all existing crossings.

ALSO UNDER FURTHER EVALUATION

- A determination will be made regarding a left turn arrow for Carverton Road at SR 0309 based on operations (level of service and queuing).
- The potential for a left turn arrow for SR 309 southbound at Dorchester Drive requires further analysis to determine if it is warranted based on signal design criteria.



- 1 SR 0309 / SR 0415
- 2 SR 0309 / DALLAS SHOPPING CENTER
- 3 SR 0309 / DORCHESTER DR
- 4 SR 0309 / MAIN ST / MAIN RD
- 5 SR 0309 / FRANKLIN ST
- 6 SR 0309 / CENTER ST
- 7 SR 0309 / SHEETZ DR
- 8 SR 0309 / PIONEER AVE / HARRIS HILL RD
- 9 SR 0309 / CARVERTON RD / CHURCH RD
- 10 SR 0309 / HILLSIDE ROAD

